

*Across the Fields*

SHERIDAN LORD  
RACELLE STRICK

October 6 – November 19, 2023

Friday through Monday 11 to 5  
midweek by appointment

THE DRAWING ROOM

55 MAIN STREET EAST HAMPTON NY 11937 T 631 324.5016  
[www.drawingroom-gallery.com](http://www.drawingroom-gallery.com) [info@drawingroom-gallery.com](mailto:info@drawingroom-gallery.com)



SHERIDAN LORD

*Landscape, July - August 1979, oil on linen, 30 x 24 inches*

## *Across the Fields*

In 1967 Racelle Strick (1928-2008) commissioned the design of a modernist home and studio near the ocean in Bridgehampton. The following year, Sheridan Lord (1926-1994) bought a farmhouse a few miles away in Sagaponack.

This exhibition highlights the artists' unique responses to the natural landscape and built environments in which they chose to live and work.



RACELLE STRICK

*Monotype 1016, c. 1982, acrylic on paper, 30 1/8 x 42 1/2 inches*



SHERIDAN LORD

*Landscape 1972, oil on canvas, 12 x 11 inches*



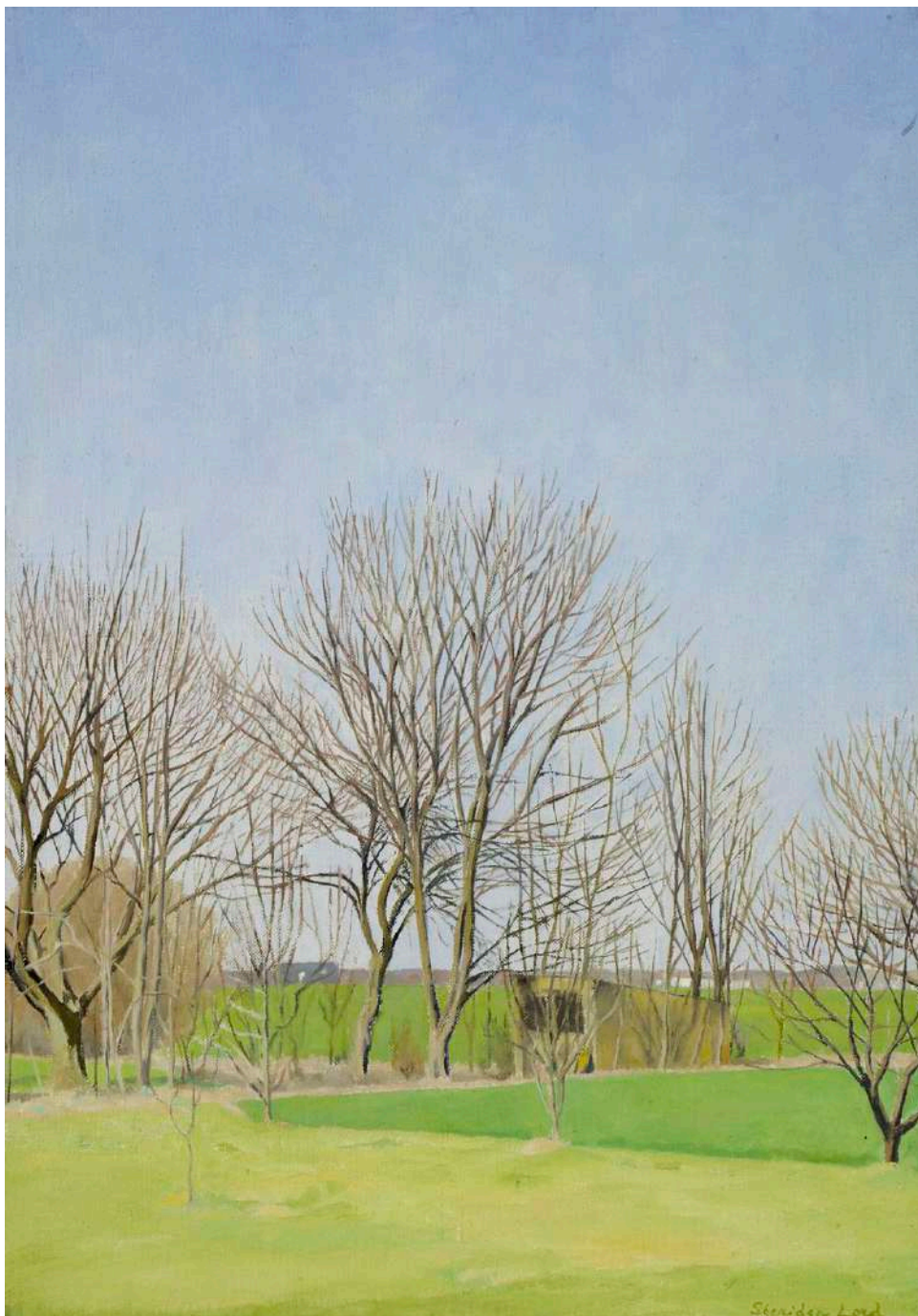
SHERIDAN LORD

*Landscape, October – November 1979, oil on linen, 9 x 18 inches*



SHERIDAN LORD

*Landscape, January – March 1982, oil on linen, 32 x 26 inches*

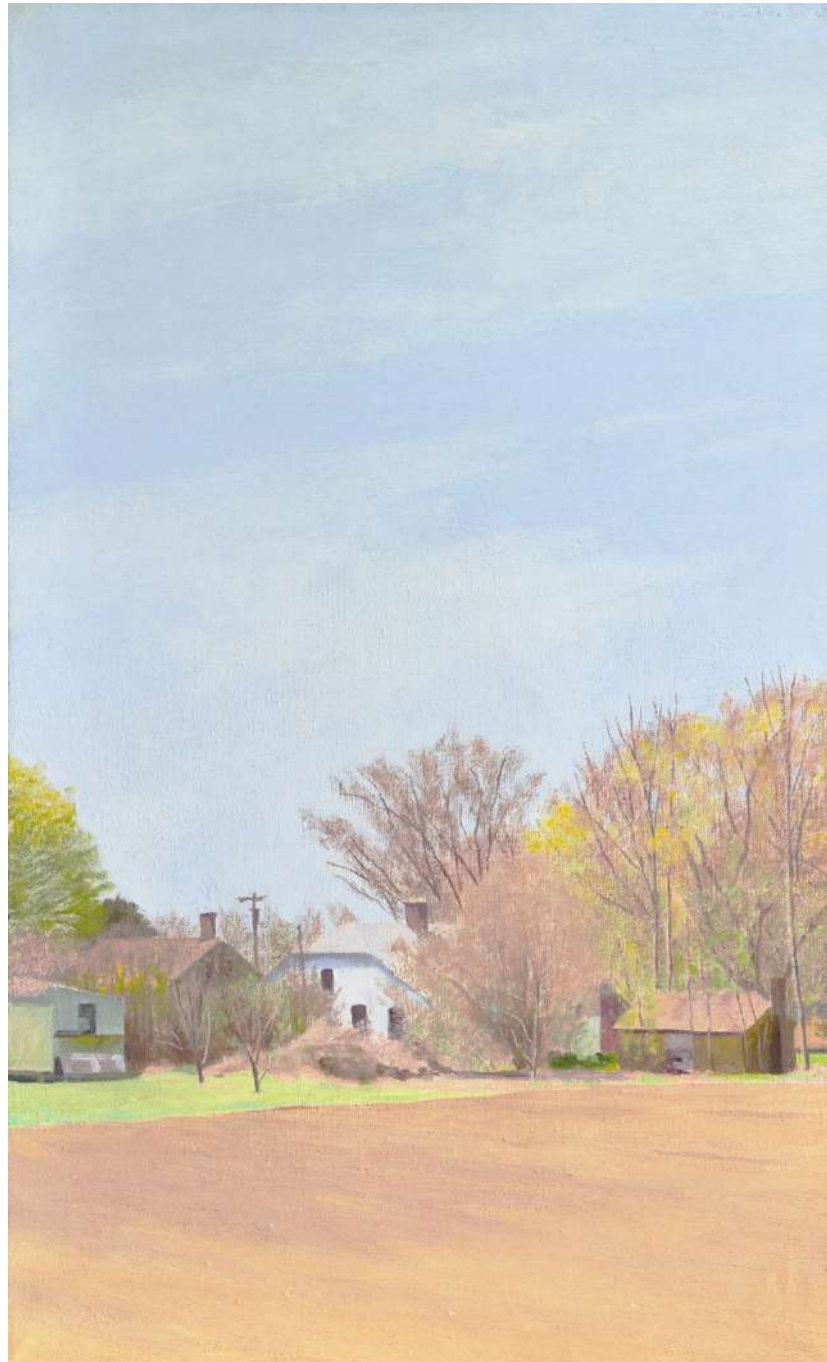


SHERIDAN LORD

*Landscape, April 1976, oil on linen, 20 x 14 inches*







SHERIDAN LORD

*Landscape, April 1977, oil on linen, 36 x 22 1/2 inches*



RACELLE STRICK

*Monotype 1017*, c. 1982, acrylic on paper, 30 1/8 x 42 1/2 inches



RACELLE STRICK

*Monotype 1010*, c. 1982, acrylic on paper, 17 3/8 x 23 3/4 inches



RACELLE STRICK *Monotype 1018*, c. 1982, acrylic on paper, 42 1/2 x 30 1/8 inches



RACELLE STRICK

*Monotype 1005, c. 1982, acrylic on paper, 17 7/8 x 24 inches*



RACELLE STRICK

*Monotype 1002, c. 1982, acrylic on paper, 17 7/8 x 24 inches*

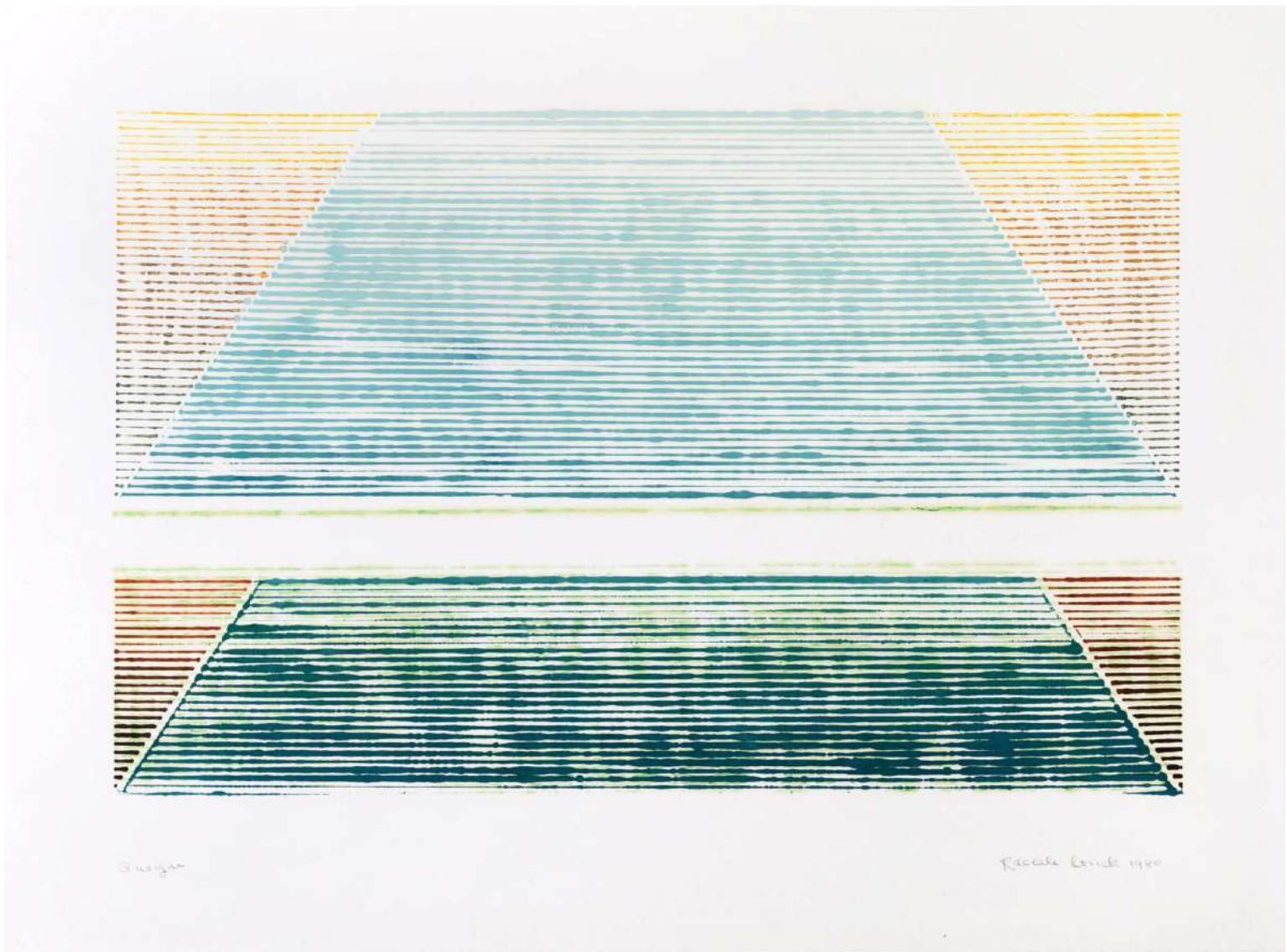






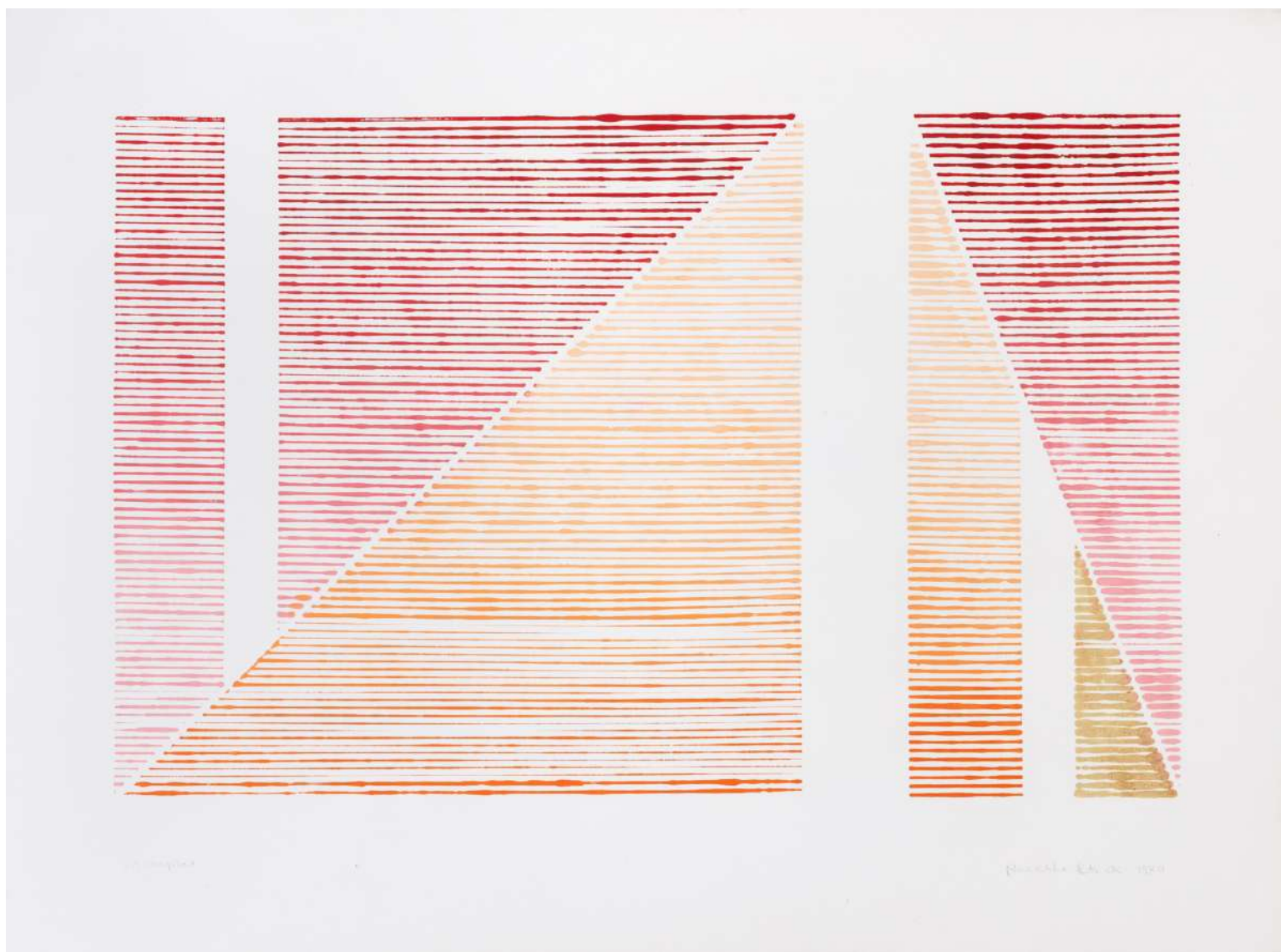
RACELLE STRICK

*Untitled*, c. 1970, acrylic on canvas, 40 x 66 1/4 inches



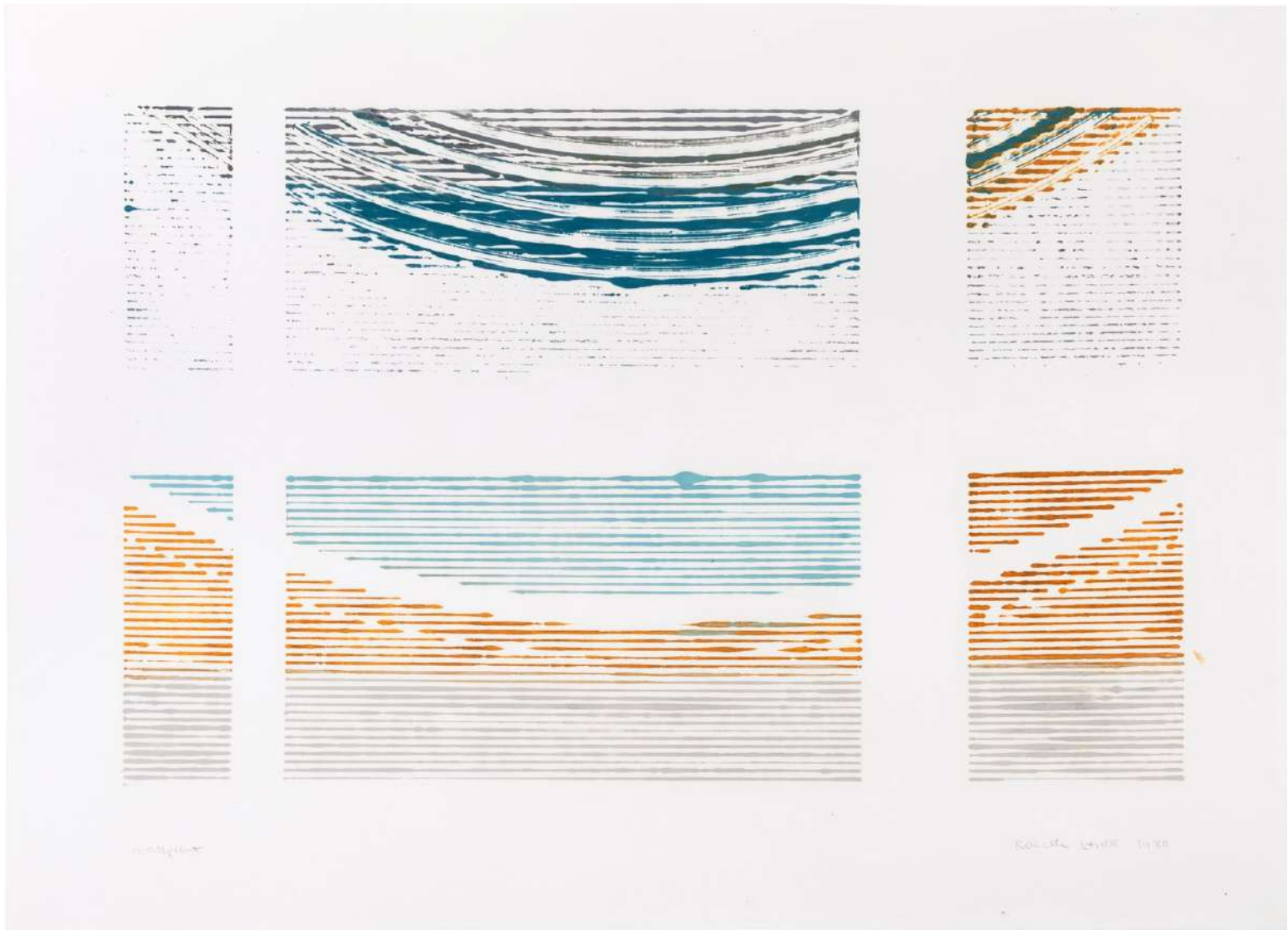
RACELLE STRICK

*Monotype 1009, 1980, acrylic on paper, 17 3/4 x 24 inches*



RACELLE STRICK

*Monotype 1013, 1980, acrylic on paper, 17 3/4 x 24 inches*



RACELLE STRICK

*Monotype 1007, 1980, acrylic on paper, 17 1/2 x 24 3/16 inches*



RACELLE STRICK

*Bridgehampton #3*, 1971, acrylic on canvas, 40 x 68 inches



RACELLE STRICK

## SHERIDAN LORD

Born 1926 New York, NY

Died 1994 New York, NY

### Education

1954 University of Iowa Writer's Workshop and School of Art

1950 Yale University

### Selected Solo Exhibitions

2023 *Across the Fields, Racelle Strick and Sheridan Lord*, The Drawing Room, East Hampton

2018 *Sheridan Lord: Sagaponack*, The Drawing Room, East Hampton, NY

1997 *Sheridan Lord: Paintings*, Peter Findlay Gallery, In association with Leslie Feely Fine Art, New York, NY

1995 *Things in Place: Landscapes and Still Lifes by Sheridan Lord*, Parrish Art Museum, Southampton, NY  
*Sheridan Lord (1926 -1994) Drawings*, Glenn Horowitz Bookseller, East Hampton, NY

### Selected Group Exhibitions

2022 *Creative Exchanges, Artists in Jackson Pollock and Lee Krasner's Address Books*  
Pollock-Krasner Study Center, East Hampton, NY

2020 *Painting Place II: Lois Dodd, Sheridan Lord, Jane Wilson*, The Drawing Room,  
East Hampton, NY

2019 *Winter Salon*, The Drawing Room, East Hampton, NY

2015 *Permanent Collection Exhibition*, Parrish Art Museum, Southampton, NY

2010 *Still Life in the Studio*, Parrish Art Museum, Southampton, NY,

2009 *American Still Life: Treasures from the Parrish Art Museum*, Parrish Art Museum,  
Southampton, NY, Permanent Collection Exhibition

1993 *Artist as Native: Reinventing Regionalism*, Babcock Galleries, New York, NY

1992 *54th Annual Artist Members' Exhibition*, Guild Hall Museum, East Hampton, NY

1990 *Long Island Landscape Painting: The Twentieth Century*, The Heckscher Museum,  
Huntington, NY

1988 *Drawing on the East End, 1940-1988*, Parrish Art Museum, Southampton, NY

1983 *The Parrish Invitational '83*, Parrish Art Museum, Southampton, NY

- 1976 *Artist of the Region Invitational Exhibition #27*, Guild Hall Museum, East Hampton, NY  
1973 *A Sense of Place: The Artist and the American Land*, Joslyn Art Museum, Omaha, NE  
1972 *Long Island Painters Awards Exhibition*, Guild Hall Museum, East Hampton, NY  
1971 *19th Annual Fine Arts Festival*, Parrish Art Museum, Southampton, NY  
1970 *18th Annual Fine Arts Festival*, Parrish Art Museum, Southampton, NY  
1969 *17th Annual Fine Arts Festival*, Parrish Art Museum, Southampton, NY  
1964 *Drawings & Prints by Daniel Serra-Badue, Isaac Soyer, Sheridan Lord & Augustus Peck*,  
Brooklyn Museum, New York, NY

### **Public Collections**

Parrish Art Museum, Water Mill, NY  
Yale University Art Gallery, New Haven, CT  
Guild Hall Art Museum, East Hampton, NY

### **Awards & Grants**

1992 Best Representational Painting, 54<sup>TH</sup> Annual Artist Members' Exhibition



## RACELLE STRICK

1928 New York, New York  
2008 Bridgehampton, New York

### EDUCATION

BS Columbia University School of Painting and Sculpture, New York, NY

### SOLO EXHIBITIONS

2023 *Across the Fields, Racelle Strick*, The Drawing Room, East Hampton  
1986 *Wilderness Now*, Dowling College, Oakdale, NY  
1984 Anita Shapolsky Gallery, New York, NY  
1980 Haber/Theodore, New York, NY  
1976 55 Mercer Street, New York, NY  
1975 Soho Center for Visual Artists, New York, NY  
1974 Benson Gallery, Bridgehampton, New York  
1974 55 Mercer Street, New York, NY  
1973 55 Mercer Street, New York, NY  
1971 Benson Gallery, Bridgehampton, NY  
1969 Rose Fried Gallery, New York, NY  
1968 Benson Gallery, Bridgehampton, NY  
1966 Rose Fried Gallery, New York, NY

### GROUP SHOWS

1992 *Landscape*, Elaine Benson Gallery, Bridgehampton, NY  
1991 *Drawings*, Guild Hall, East Hampton, NY  
1989 *Sky, Sea, and In Between*, Elaine Benson Gallery, Bridgehampton, NY  
1986 The Bronx Museum of the Arts, Bronx, NY  
1986 F.A.M.L.I. Museum, Hempstead, NY  
1985 *Hampton Artists*, Anita Shapolsky Gallery, New York, NY  
1985 *Gallery Artists*, Anita Shapolsky Gallery, New York, NY  
1985 *Nature Conservancy*, Benson Gallery, Bridgehampton, NY  
1985 *Walls: The Artist as Philosopher/Poet*, Guild Hall, East Hampton, NY  
1984 Wunsch Art Center, Glen Cove, NY  
1984 Artists Members, Guild Hall, East Hampton, NY

- 1984 Bologna/Landi Gallery, East Hampton, NY  
1983 Bologna/Landi Gallery, East Hampton, NY  
1982 Bologna/Landi Gallery, East Hampton, NY  
1982 *Sweet Art Sale*, Franklin Furnace, New York, NY  
1982 *American Abstract Artists*, City Gallery, New York, NY  
1981 *Transitions*, Summit Art Center, A.A.A., Summit, NJ  
1980 *Gallery Artists*, Haber/Theodore, New York, NY  
1979 *Gallery Artists*, Haber/Theodore, New York, NY  
1978 *Women at the Laundry*, East Hampton, NY  
1978 *Cool Painting*, Benson Gallery, Bridgehampton, NY  
1977 A.A.A., Paterson College, Wayne, NJ  
1976 *American Abstract Artists*, Westbeth, New York  
1974 *Point of View: 19 Creative Women*, Portland Museum of Art, Portland, ME  
1974 *Contemporary Reflections*, The Aldrich Museum, Ridgefield, CT  
1972 *Drawings*, Corpus Christi Museum, Corpus Christi, TX  
1972 *Drawings*, Baltimore Museum of Art, Baltimore, MD  
1969 Jewish Museum, New York, NY (1970)  
1969 Milwaukee Art Museum, Milwaukee, WI (1970)  
1969 *A Plastic Presence*, San Francisco Museum of Art, San Francisco, CA (1970)

#### PUBLIC COLLECTIONS

Guild Hall, East Hampton, NY  
New York University Art Collection, New York, NY  
Birla Industrial and Technical Museum, India